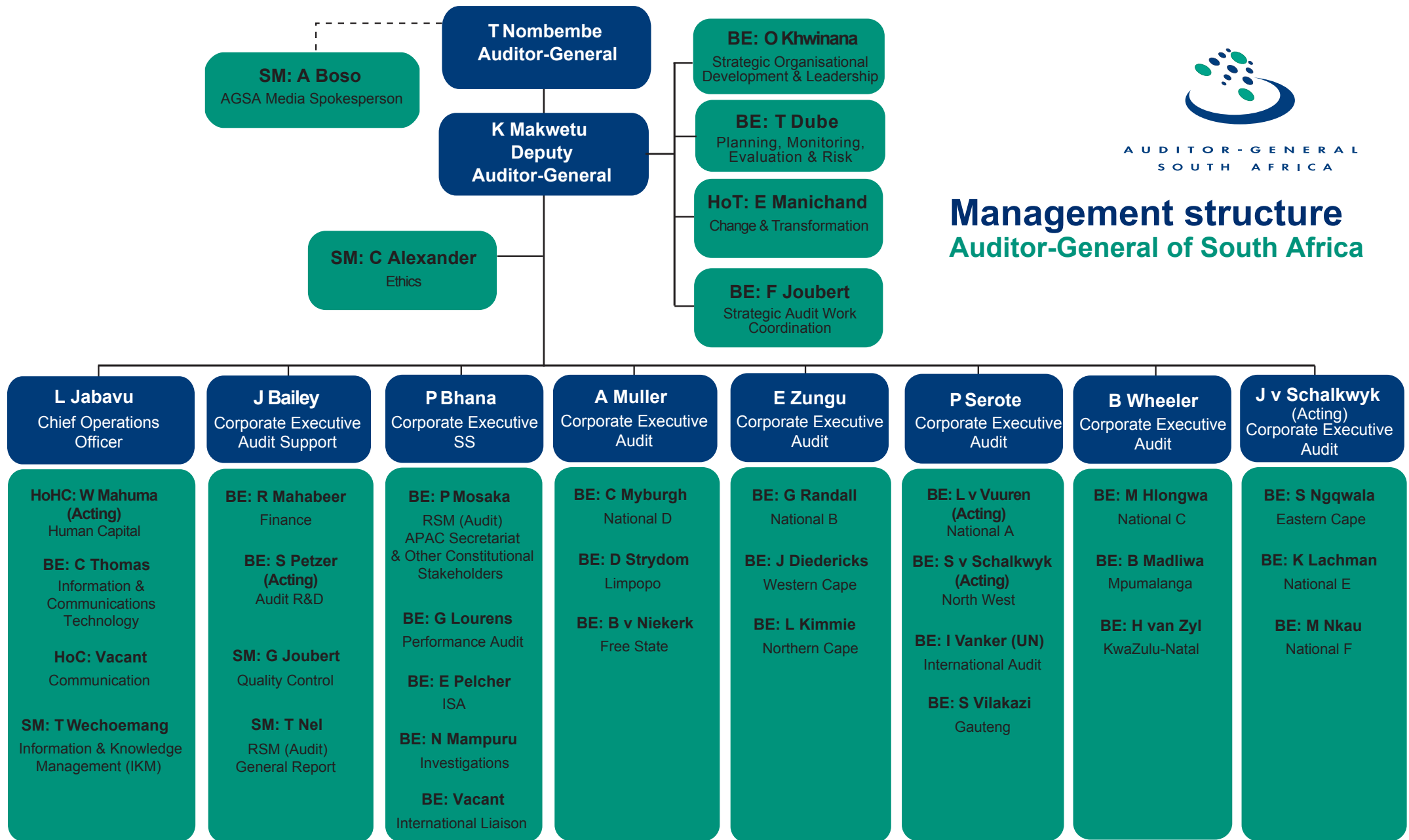




AUDITOR-GENERAL
SOUTH AFRICA

Management structure Auditor-General of South Africa



BE = Business Executive SM = Senior Manager SS = Specialised Services
RSM = Reputation & Stakeholder Management R&D = Research and Development ISA = Information Systems Audit
HoT = Head of Transformation HoC = Head of Communication HoHC = Head of Human Capital